

Case Study

Location: The Royal Hampshire County Hospital, Winchester, Hampshire

Project Value: £75,000.

Project Partners / Client: Winchester and Eastleigh NHS Trust.

Architect / Lead Consultant: Altus Andrews.

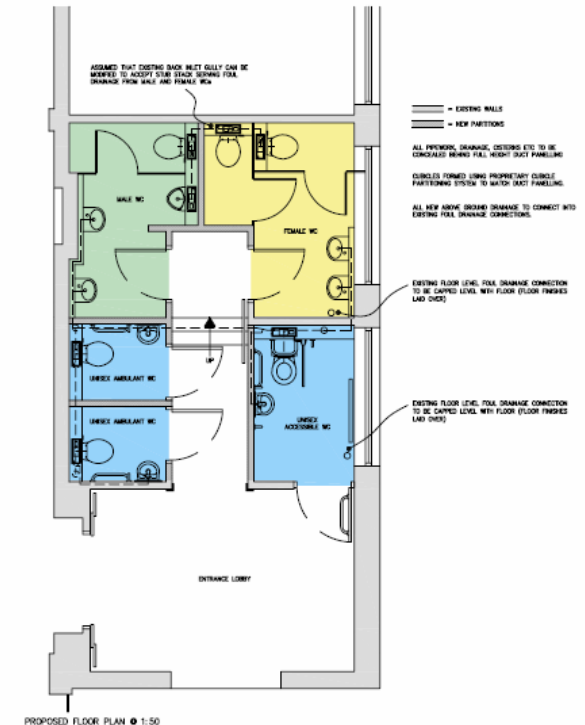
Quantity Surveyor: Altus Andrews.

Project Vision:

Refurbishment of Catering Block Toilets: The project consists of the refurbishment and reconfiguration of the existing male and female toilets located within the main entrance lobby of the Restaurant and Costa Coffee building. The project brief is to provide modern facilities incorporating unisex ambulant and assisted WC's and baby changing facilities, none of which are present within the existing toilets.

Altus Andrews are appointed to provide full project management, design and cost planning services for the scheme from its inception and through to completion on site. We are responsible for the preparation of the scheme design, tender documentation and review of the tender returns. We will then continue with all post contract administrative duties through to handover of the project and agreement of the final account.

The works are presently in the tender preparation stage and are programmed to complete during the latter part of 2009.



CATERING TOILETS